



## Ironclad Mega LED Highbay

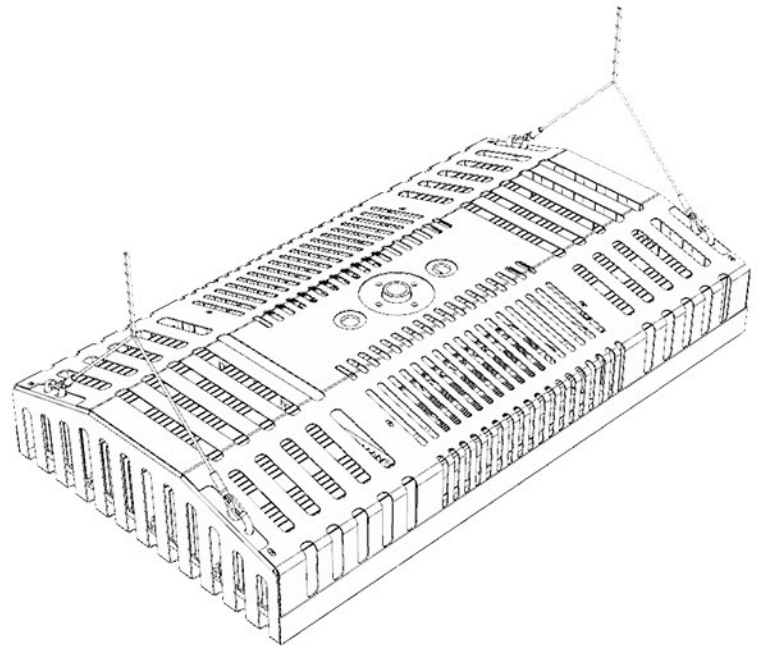
### User Guide

#### NOTE

Please read this entire manual to understand how to safely use this product. Specifications are subject to change without notice. Please visit [www.shatrshield.com](http://www.shatrshield.com) for the most recent user guide versions.

#### INCLUDED IN THIS BOX

Shat-R-Shield Inc. Ironclad Mega Highbay light engine, QTY 1  
3/4" NPT hook (ST Mount Option), QTY 1  
Aircraft cable suspension (AC Mount Option), QTY 2  
User Guide, QTY 1



#### UNPACKING

- 1) Unpack and carefully examine the product.
- 2) Report any damage and save all packing materials if any part(s) were damaged during shipping.
- 3) Do not attempt to use this light engine if it is damaged.

#### INSTALLATION INSTRUCTIONS

- 1) The product should be installed into your facility by a qualified electrician or technician in accordance with relevant local codes.
- 2) There is always a risk of electric shock when installing electrical devices. Ensure that the main power source is off when wiring the product.

#### MAINTENANCE

- 1) Disconnect the product from the power supply prior to cleaning.
- 2) Use a dry or slightly moistened cloth for cleaning.

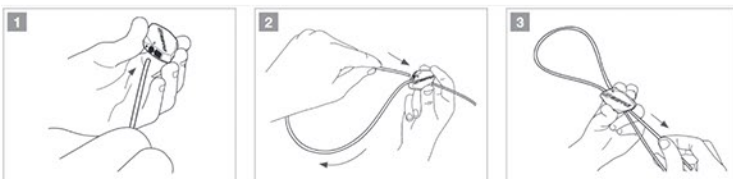
#### INSTALLATION STEPS (ST Mount Option)– Center hook

- 1) Screw the hanging hook to the highbay.
- 2) Ensure the hanging hook is tightened as far as possible.
- 3) Hang the highbay to an eye bolt or hook in the ceiling. Ensure the assembly the high bay is hanging from is rated for the weight of the fixture (56 lbs for 490W; 67 lbs for 680W).
- 4) Connect the input and ground wires of the highbay to the supplied power. Optional: Connect 0-10V dimming wires. The purple wire is positive (+) and the grey wire is negative (-) for the dimming cord.

#### INSTALLATION STEPS (AC and CM Mount Option)– Air craft cable and corner mount option

- 1) If using optional supplied air craft cable it can be adjusted to the desired length. Please see appendix A.
- 2) Optionally the installer can use their own mounting cables/chains but they must be rated for the weight of the fixture.
- 3) Hang the highbay to the appropriate mount points to the ceiling. Ensure the assembly the high bay is hanging from is rated for the weight of the fixture (56 lbs for 490W; 67 lbs for 680W). Level fixture.
- 4) Connect the input and ground wires of the highbay to the supplied power. Optional: Connect 0-10V dimming wires. The purple wire is positive (+) and the grey wire is negative (-) for the dimming cord.

#### APPENDIX A– Air craft cable adjustments



Release

