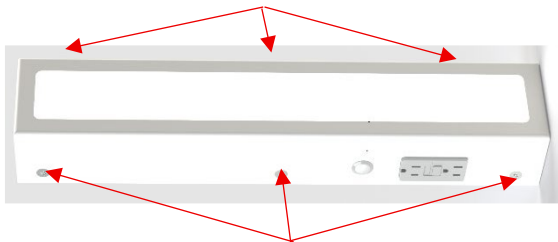


IRONCLAD[®] SLIMLIN

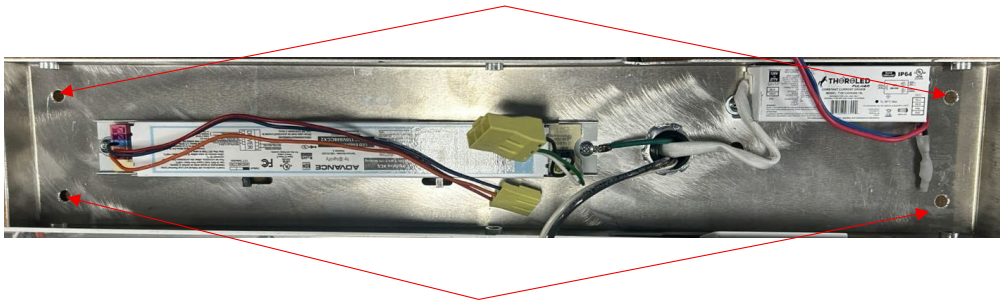


INSTALLATION INSTRUCTIONS

1. Remove all components from packaging. Please note that there may be a package of mounting hardware included.
2. The unit will come fully assembled and it will be necessary to take it apart in order to mount it on a wall.
3. Remove the 6 countersunk tamper proof screws (3 on top and 3 at the bottom of the unit) with a Torx 20 bit.

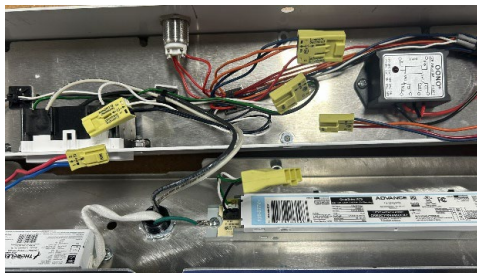
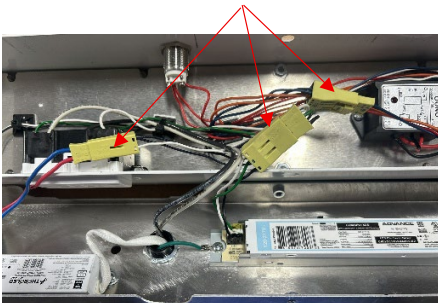


4. Determine the desired orientation depending on what options were selected regarding a on/off switch and GFCI. Remove the top cover from the chassis in order to see the drill pattern of the chassis.



Mounting Holes

5. Disconnect the 2 or 3 (Night Light Option) yellow lighting connectors to separate the top from the bottom housing.



6. The appropriate switch settings on the back of the unit may need to be set to the desired wattage and color temperature prior to mounting and closing the unit on the wall.
7. After setting the wattage and CCT (If required) the unit is ready to be electrically connected. The unit can be wired to either 120Vac or 277Vac **but if a GFCI was selected then only connect to a 120Vac power source**. There may be two sets (pairs) of independent wires coming out of the chassis if a night/count light was ordered. Black wires are (+) or Hot, White wires are (-) or neutral and a Green wire is ground.
8. Depending on the concrete / brick fastener of choice, you can have another person hold the fixture tightly in place against the wall while you run the fasteners in. ***THREAD LOCKER IS HIGHLY RECOMMENDED FOR ALL FASTENERS***
9. After mounting the chassis to the wall ensure all wiring is complete and connect all the yellow connectors again. At this point an electrical test can be done to ensure the wiring is correct.
10. Now place the top cover over the chassis and reinsert the 6 countersunk screws with a T20 bit. ***THREAD LOCKER IS HIGHLY RECOMMENDED FOR ALL FASTENERS***
11. The final step upon completion of installation will be to add caulk around any edges of the fixture that do not sit perfectly flush against the wall. (Seen most often with Brick / Concrete.)