



CASE STUDY: FLOYD COUNTY JAIL



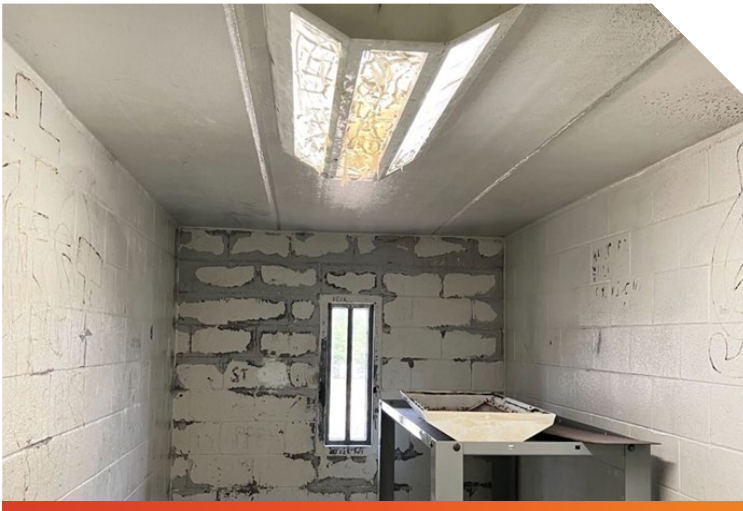
BACKGROUND:

The Floyd County Jail is the largest building owned by the Floyd County Government. It spans 256,000 square feet and has 714 beds. The jail serves Floyd County, The City of Rome, and Cave Spring. It accommodates individuals awaiting trial, as well as those who have been sentenced by the county or the state. In 2020, the jail housed an average of 507 inmates daily.

Install Location: Cell, Shower, Dress Out Room, and Large Pod

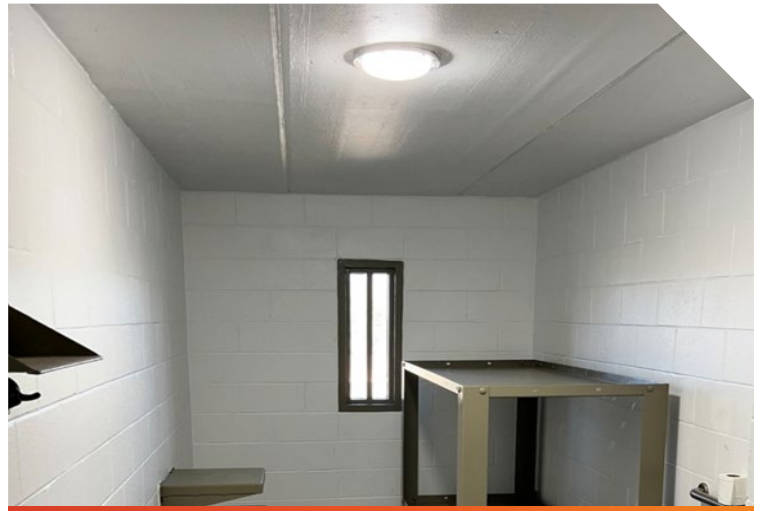
Prior Lighting Fixtures: Fluorescent Light in middle of cell, Fluorescent Light in encased box, Fluorescent Lights, Fluorescent Lights on Lower-Level Overhang, Fluorescent Lights on Ceiling above doors, and Fluorescent Lights on Ceiling above main pod area

Number Of Replaced Fixtures: 202



CHALLENGE:

The Floyd County Sheriff's Office worked with Hardtime Products and Shat-R-Shield Lighting to find a solution for the lumen output of each fixture. There was a problem with old lighting candle power readings of 4 to 12, and they needed 20 plus to meet American Correctional Association (ACA) requirements.



SOLUTION:

Shat-R-Shield Lighting recognized the need for an LED fixture that could deter tampering or removal in correctional facility while also meeting ACA standards and IES targets. The Ironclad® VR product line offers the sufficient brightness for a calming light output with full coverage, making it a revolutionary new vandal-resistant LED light fixture designed to last for many years.

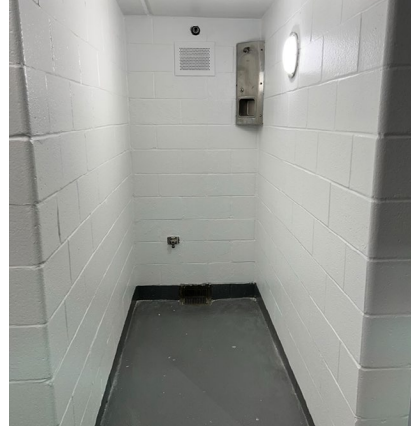


CASE STUDY: FLOYD COUNTY JAIL

SHOWER BEFORE



SHOWER AFTER



DRESS OUT ROOM - LEFT



DRESS OUT ROOM - RIGHT

