



Project	
Type	
Date	
Notes	

Ironclad® LED VTHB

The Ironclad® LED Vapor Tight High Bay is an ideal retrofit for fluorescent fixtures commonly installed in applications exposed to moisture, dust and other harsh elements that require frequent wash down. With lumen outputs ranging from 23,800 to 34,365 and boasting up to 152 LPW, this high efficiency, non-metallic LED solution replaces a 6 lamp T8 or 6 Lamp T5 fixture.

Housing Construction

Rugged Non-Metallic Construction - Built with fiberglass reinforced polycarbonate material with seamless gasket seal and paired with stainless steel components for optimal chemical and impact resistance.

Built for Performance - Rounded edges allow for easy water shed and durability against high-pressure hose down.

Light Distribution - Tethered lens available in clear or frosted for uniform, glare-free illumination.

Customizable - Available in a variety of lumen outputs and voltage options with multiple mounting configurations.

Battery Backup - Provides lighting for 90 minutes.

Specifications

- Dimming: 0-10V & Battery Backup
- Power Factor: > 0.9
- Light Distribution: Beam angles, frosted lens: 108°, Clear 115°

Applications

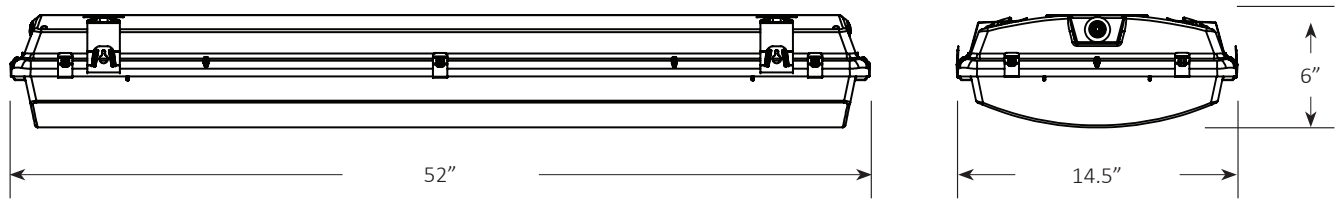
Food & Beverage Processing, Industrial Facilities, Tunnels, Cold Storage, Warehouses, Wastewater Treatment Plants & Natatoriums

Watts	158W & 236W
Voltage	120-277V; 347-480V
Lumens	23,800 & 34,365
Color Temperature	4000K & 5000K
LED Life	Projected: 72,000 hours
Operating Temperatures	120-277V: -40°F to 131°F; -40°C to 55°C 347-480V: -40°F to 122°F; -40°C to 50°C; 32°F to 95°F w/ backup
Warranty	5 year limited warranty





Dimensional Drawing



Ordering Guide

Wattage	Fixture	CCT	Lens	Power Supply	Sensor	Whip	Mount	Access.	Access. 2	Access. 3	Rev.
	VB								00	00	02
180 = 158W	VB = Vapor Tight High Bay	40 = 4000K	CL = Clear	VL = 120-277V	N = None	00 = None	00 = None	00 = None			
				VH = 347-480V		06 = 6ft	HG = V-Hanger	01 = 5-20P			
						12 = 12ft	AC = Aircraft Cables	02 = 5-15P			
		50 = 5000K	FR = Frosted	LB = 120-277V w/ Battery Backup	A = Area	15 = 15ft	CM = Ceiling	03 = L6- 20P			
270 = 236W				HB = 347-480V w/ Battery Backup		20 = 20ft	BR = Adjustable Bracket	04 = L6- 15P			
						30 = 30ft	FM = Flush	05 = L8- 20P 06 = L7- 15P			