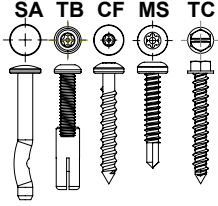


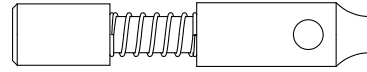
ACCESSORY SELECTION GUIDE

Correctional Installation Anchor Types, Surface Boxes & Mounting Components

Anchor Selection



- (SA) 2" Spike Anchor, removable
- (TB) 1" Tamper-proof Bolt for concrete using Torx T27
- (CF) 1.75" Cinderblock Fastener for cinder blocks using Torx T27
- (MS) 1.5" Metal Screw T30
- (TC) 1.75" Tapcon Concrete Screw



- Hammer Drill Install Tool
- Spike Anchor Extraction Tool Designed by Shat·R·Shield for removal of round spike anchors



Surface Box Specs

Material	14 Gauge Steel
Coating	Powder Coated with Polyester TGIC

Surface Box Accessory

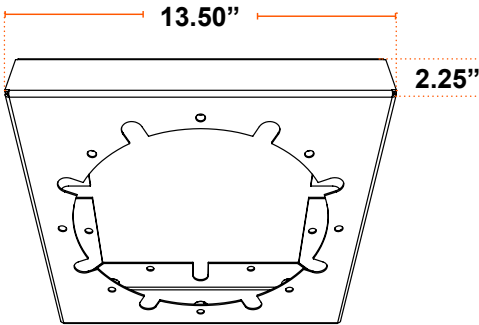
Enclosure housing for electrical connections

Surface boxes protect the electrical connections from damage, as well as any self harm and accidental shocks. Sometimes these boxes can cover existing connections and any structural damage to ceilings, walls, etc.

Surface Box Dimensions

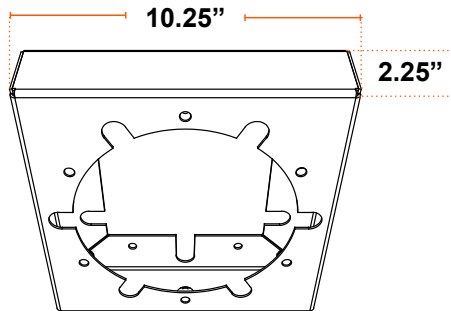
A. VR Pro™ Surface Box

JB = Surface Box Kit



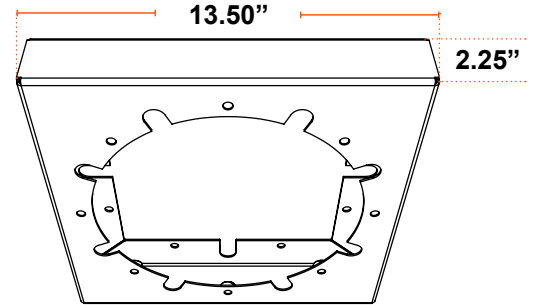
B. H2O Pro™ Surface Box

JB = 14ga Surface Box Kit



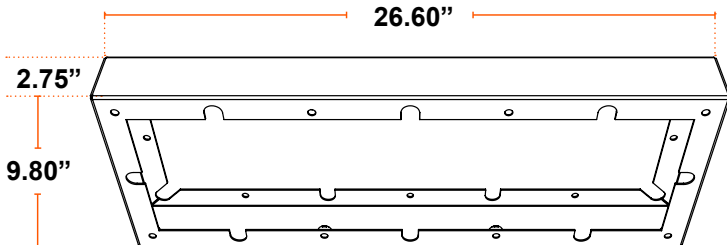
C. GDA Surface Box

JB = Surface Box Kit



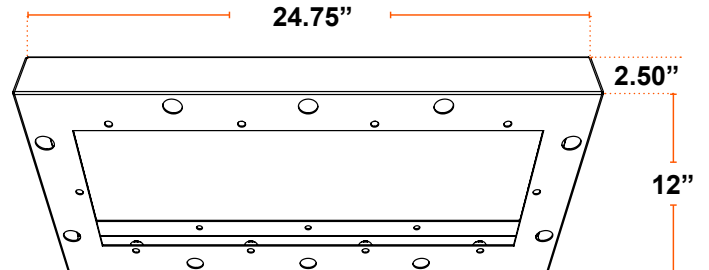
D. Linear Pro™ Surface Box

JB = 14ga Surface Box



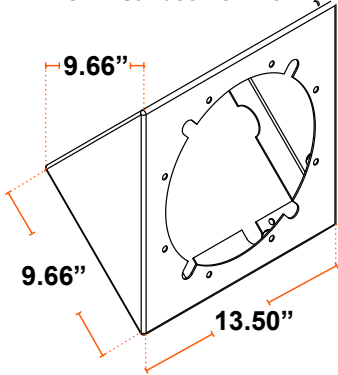
E. GDL Surface Box

JB = 14ga Surface Box Kit



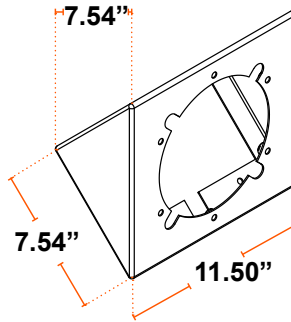
F. VR Pro™ Corner Box

CB = Surface Box Kit



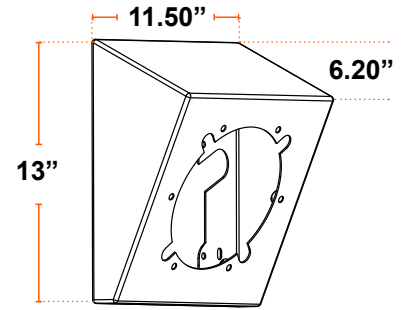
G. H2O Pro™ Corner Box

CB = 14ga Corner Box Kit



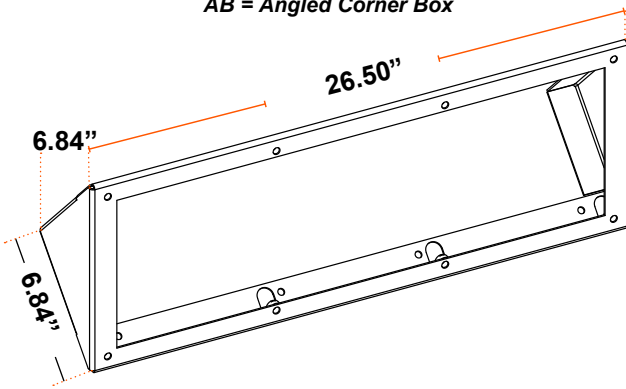
H. H2O Pro™ Down Light Box

DL = Ligature Resistant Downlight Surface Box



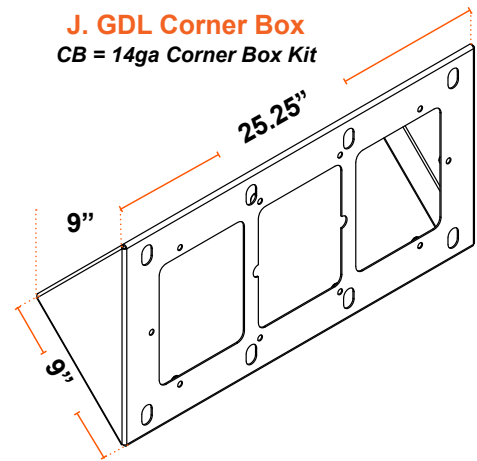
I. Linear Pro™ Angeled Corner Box

AB = Angled Corner Box



J. GDL Corner Box

CB = 14ga Corner Box Kit



Surface Box Renderings

Fig. A - VR Pro™

JB = Surface Box Kit



Fig. B - H2O Pro™

JB = 14ga Surface Box Kit



Fig. C - GDA

JB = Surface Box Kit



Fig. D - Linear Pro™

JB = 14ga Surface Box

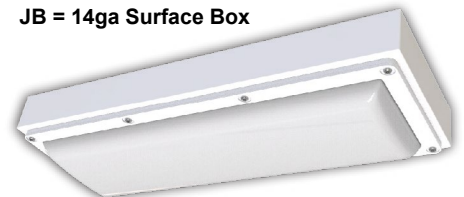


Fig. E - GDL

JB = 14ga Surface Box



Fig. F - VR Pro™

CB = Surface Box Kit



Fig. G - H2O Pro™

CB = 14ga Corner Box Kit



Fig. H - H2O Pro™

DL = Ligature Resistant Downlight Surface Box



Fig. I - Linear Pro™

AB = Angled Corner Box



Fig. J - GDL

CB = 14ga Corner Box Kit



Surface Box Renderings Continued

Fig. K - GDL
PA = Corrugated Plate



Fig. L - GDL
DL = Ligature Resistant
Downlight Box



Fig. M - GDL
PM = Pendant Mount



Fig. N - Puck Pro
HB = Hunstville Box with Switch and Outlet



Fig. O - Linear Pro™
PB = Corrugated Plate

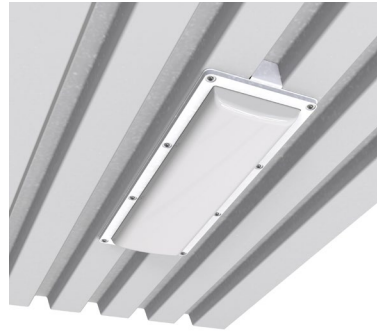


Fig. P - Linear Pro™
DL = Ligature Resistant Downlight Box



Fig. Q - Linear Pro™
JT = JBox with Thin profile



Fig. R - Puck Pro
RM = Rail Mount

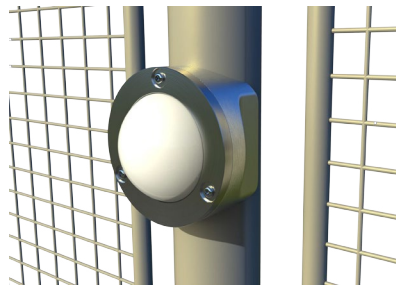


Fig. S - Puck Pro
LB = Lithonia Box



Fig. T - VR Pro™
PK = Double T plate

