

The logo for shat.r.shield lighting inc. features a stylized orange and white grid icon to the left of the company name in a bold, black, sans-serif font.

shat.r.shield lighting inc.

The title 'LED Fixture Products & Overview' is displayed in white text on an orange background. The word 'LED' is in a larger, bold font, and 'Fixture' is in a smaller font. Below it, 'Products & Overview' is in a standard font. The background of the entire slide is a photograph of an industrial facility with blue metal structures and yellow safety railings.

LED Fixture Products & Overview

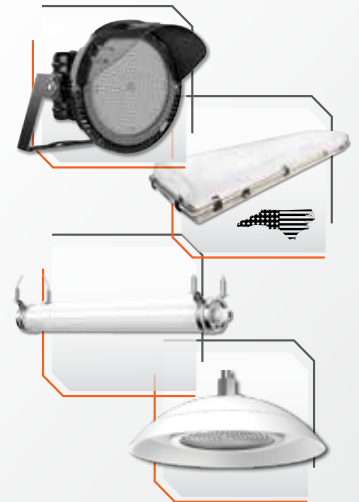
The website address 'www.shatrshield.com' is written in orange text at the bottom left of the slide.

www.shatrshield.com

Ironclad® High Bays

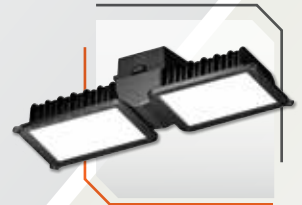


	Ironclad® High Bay Flood Light	Ironclad® Vapor Tight High Bay	Ironclad® Light Duty Linear	Ironclad® Wash Down High Bay
Watts	450 / 600	158 / 236	20W, 50W	200
Lumens	72,000 / 96,000	up to 22,120 / up to 32,860	2700, 6800	26,000
Operating Temp	-40°F (-40°C) to 149°F (65°C)	-40°F (-40°C) to 122°F (50°C)	-22°F (-30°C) to 104°F (40°C)	-22°F (-30°C) to 122°F (50°C)
Weight	Bracket: 4.7lbs., Visor: 1.95 lbs., Main Unit: 29 lbs.	30 lbs.	-	16 lbs.
Life Hours	L70 > 36,000 Hours	L70 > 72,000 Projected: 100,000+	L70 > 54,000 Hours	L70 > 50,000 Projected: 100,000
Voltage	100 - 277VAC, 50 / 60 Hz	120-277V / 347-480V	Universal 120 - 277V	120-277V
CCT	5000K	4,000K / 5,000K	5000K	5,000K
LPW	-	140	-	130
Replaces	1000 - 2000 HPS	6 lamp, T8 or T5 fixture		400W HID
Mounting	-	V-Hanger, Aircraft Cables, Ceiling Mount, Stainless Steel Adjustable Bracket	Surface, Suspended	Surface, Hook, 3/4" NPT Adapter



Incoplas® Product Family

	Incoplas® LED Hybrid™	Incoplas® LED Hybrid™ <i>Hazardous Locations</i>	Incoplas® LED Vapor Tight
Watts	Standard: 45 / 90	45 / 90	35 / 70
	High Lumen: 48 / 95		
	High Ambient: 30 / 60		
Lumens	Standard: 5,000 / 10,000	up to 5,600 / up to 11,200	3,500 / 7,000
	High Lumen: 8,000 / 15,600		
	High Ambient: 5,300 / 10,600		
Operating Temp	-40°F (-40°C) to 149°F (65°C)	-22°F (-30°C) to 113°F (45°C)	-22°F (-30°C) to 113°F (45°C)
Weight	7.5 lbs.	7.5 lbs.	5 lbs.
L70	60,000 / Projected: 100,000	60,000 / Projected: 100,000	54,000 / Projected: 85,000
Voltage	120-277V		
CCT	4,000K / 5,000K	4,000K / 5,000K	5,000K
LPW	111	up to 124	100
Replaces	100W & 250W HID; T5 & T8 fixtures	100W & 250W HID; T5 & T8 fixtures	2 or 4 lamp, 4' T8 fixture
Mounting	Surface, Trunnion, Pendant, Wall Pack, Adjustable Wall Pack, Stanchion, Flood	Surface, Trunnion, Pendant, Adjustable Wall Pack, Stanchion, Flood	Aircraft Cable, Pendant, Conduit, Surface



Incoplas® Descriptions

Incoplas® LED Hybrid™

The Incoplas® LED Hybrid™ is designed with graphite infused thermal polymers for corrosion resistance and durability in harsh environments. Functional as an area, flood or wall pack light with a multitude of mounting and optic options.

■ ABS, UL 1598A, UL 1598, UL Wet Location, IP69K, IP66, NEMA 4X, NEMA 5, USDA, NSF, DLC, cULus, RoHS

Incoplas® Hazardous Locations LED Hybrid™

The Incoplas® LED Hybrid™ for hazardous locations is a durable multi-purpose and corrosion-resistant LED lighting solution that can be used in heavy industrial applications where classified lighting is required.

■ Class 1 Div 2, Groups: A, B, C, D; Class 2 Div 2, Groups: F, G; Class 3 Div 1 & 2, UL 844, ABS, UL 1598A, UL1598, IP69K, IP66, NEMA 4X, NEMA 5, USDA, DLC, NSF, cULus

Incoplas® LED Vapor Tight

The Incoplas® LED Vapor Tight is manufactured with thermally conductive engineered polymers specially designed to withstand moisture, dust and harsh environments in applications where exposure is detrimental to the life of the fixture.

■ UL 1598A, UL 1598, IP66, UL Wet Location, NEMA 4X, NEMA 5, USDA, DLC, NSF, cULus

Ironclad® Descriptions

Ironclad® High Bay/Flood Light

The Ironclad® High Bay/Flood Light is a high lumen output system that combines two designs. This fixture's ability to cover large areas by utilizing high lumen outputs and versatile beam angles allows for maximum coverage in high mounting applications such as hangers, building exteriors and open recreational areas.

■ DLC, IP65 Dust-proof & Pressure Jets and IK08 5 Joules of impact resistance.

Ironclad® LED Vapor Tight High Bay

The Ironclad® LED Vapor Tight High Bay is an ideal replacement for fluorescent fixtures commonly installed in applications exposed to moisture, dust and other harsh elements that require frequent wash-down. It has high lumen outputs ranging from 22,000 to 33,000 and is energy efficient.

■ IP65, IP66, IP67, UL 1598, UL Wet Location, NEMA 4X, NEMA 5, USDA, NSF, DLC, cULus, RoHS

Ironclad® Light Duty Linear

The Ironclad® Light Duty Linear fixture is a rugged LED lighting solution that can be used as an area light, walkway light or task light. The fixture's ability to operate as a stand-alone light or to be wired together in-line creates a multitude of uses in a easy to install lighting solution.

■ cULus, IP69K High Temp & Pressure Jets, IP66 Watertight & Dust-proof, IK10, IK06, NEMA4X Watertight, NEMA5 Dust-tight, UL Wet Location, UL1598, USDA

Ironclad® Wash Down High Bay

The Ironclad® Wash Down High Bay is an LED fixture designed with a smooth, rounded housing for easy cleaning in food processing and wash-down environments.

■ IP69K, IP66, NSF, DLC, cULus, RoHS

Ironclad® Vandal-Resistant Family

Shat-R-Shield Lighting Inc. recognized the need for an LED Fixture line to eliminate, or drastically delay, tampering or removal of a light fixture within correctional, institutional and recreational facilities. The Ironclad® VR product line offers adequate footcandles for a soothing light output with wall-to-wall coverage, along with a night light in specific models per DOC guidelines for a revolutionary new vandal-resistant LED light fixture.

	Ironclad® VR Pro	Ironclad® H2O Pro	Ironclad® General Duty Area
Lumens	4400, Count Light 680	1500, 1800, 2650	4300
Wattage	42W	24W, 27W, 32W	42W
Light Engine CCT	2700K, 3500K, 4000K or 5000K	4000K or 5000K	2700K, 3500K, 4000K or 5000K
Night Light CCT	2700K	N/A	-
Footcandles	35 ftc* at the desk level; 22 ftc* at the floor	25 ftc* at the floor	35 ftc* at the desk level; 22 ftc* at the floor
Life Hours	L70 > 75,000 Hours; Projected > 100,000+ Hours	L70 > 75,000 Hours; Projected > 100,000+ Hours	L70 > 75,000 Hours; Projected > 100,000+ Hours
Voltage	Universal 120 - 277V	Universal 120 - 277V	Universal 120 - 277V
Weight	7.9 lbs.	3.75 lbs.	-
Dimensions	12.25" diameter x 2.13" tall	9.25" diameter x 1.9" tall	13" diameter x 1.93" tall



Classic LED Fixtures

	LED High Bay	LED Low Bay
Watts	200 / 280	100
Lumens	24,000 (200W) / 33,000 (280W)	12,500
Operating Temp	-40°F (-40°C) to 122°F (50°C)	-40°F (-40°C) to 122°F (50°C)
Weight	20 lbs.	20 lbs.
L70	>55,000	>55,000
Voltage	120-277V / 347-480V	
CCT	5,000K	5,000K
LPW	up to 120	125
Replaces	400W metal halides	175W metal halides
Mounting	Heavy duty hook	Heavy duty hook

Classic Descriptions

Classic LED High Bay

The LED High Bay is a direct 1-for-1 replacement for 400W HID lamps. This 200W fixture is ideal in applications with ceiling heights above 20 feet & the 280W fixture is perfect for ceiling heights above 30 feet. Full 7-year warranty.

■ UL Damp Location, DLC, cULus, RoHS

Classic LED Low Bay

Shat-R-Shield's LED Low Bay utilizes the same construction as the LED High Bay. The durable and highly efficient Low Bay is a direct retrofit for HID lamps in industrial and commercial applications.

■ UL Damp Location, DLC, cULus, RoHS



www.shatrshield.com | (800) 223-0853

Commercial/Industrial



Wastewater Treatment



Marine



Pulp & Paper



Food Processing



Oil & Gas



Mining



Certification Key

- **DLC:** Meets criteria for energy efficiency and has been included on the QPL (Qualified Products List). Signifying that a product is eligible for rebates, where applicable.
- **NSF:** Approved for use in facilities producing consumer goods, such as food and beverage processing and food service.
- **RoHS:** Restriction of Hazardous Substances Directive - prohibits the use of certain hazardous materials used in electrical and electronic devices.
- **IP65:** Protected against water spray from all directions and dust that may harm equipment.
- **IP66:** Protected against high pressure water jets (all directions) and dust that may harm equipment.
- **IP67:** Protected against strong water jets and waves and dust that may harm equipment.
- **IP68:** Protected against temporary immersion and dust that may harm equipment.
- **IP69K:** Protection against close range high temperature, high pressure wash down (1450 PSI at 176°F).
- **cULus:** Product is UL certified for use in Canada and the US.
- **UL Damp Locations:** Suitable for locations normally or periodically subject to condensation in, on, or adjacent to equipment including partially protected locations.
- **UL Wet Locations:** Suitable for a location in which water or other liquid can drip, splash or flow on or against electrical equipment.
- **UL 844:** Standard for luminaires for use in hazardous (classified) locations.
- **UL 1598:** Standard applies to luminaires for use in non-hazardous locations.
- **UL 1598A:** Standard for luminaires installation on marine vessels.
- **NEMA 4X:** Corrosion resistant; Enclosures constructed for either indoor or outdoor use to provide a degree of protection to personnel against incidental contact with the enclosed equipment; to provide a degree of protection against falling dirt, rain, sleet, snow, windblown dust, splashing water, hose-directed water, and corrosion; and that will be undamaged by the external formation of ice on the enclosure.
- **NEMA 5:** Dust tight; Enclosures constructed for indoor use to provide a degree of protection to personnel against incidental contact with the enclosed equipment; to provide a degree of protection against falling dirt; against settling airborne dust, lint, fibers, and flyings; and to provide a degree of protection against dripping and light splashing liquids.
- **ABS:** American Bureau of Shipping; Safety and quality standard for ships and offshore structures; often required for products used in marine applications.

